

# **Your New Health Care System**

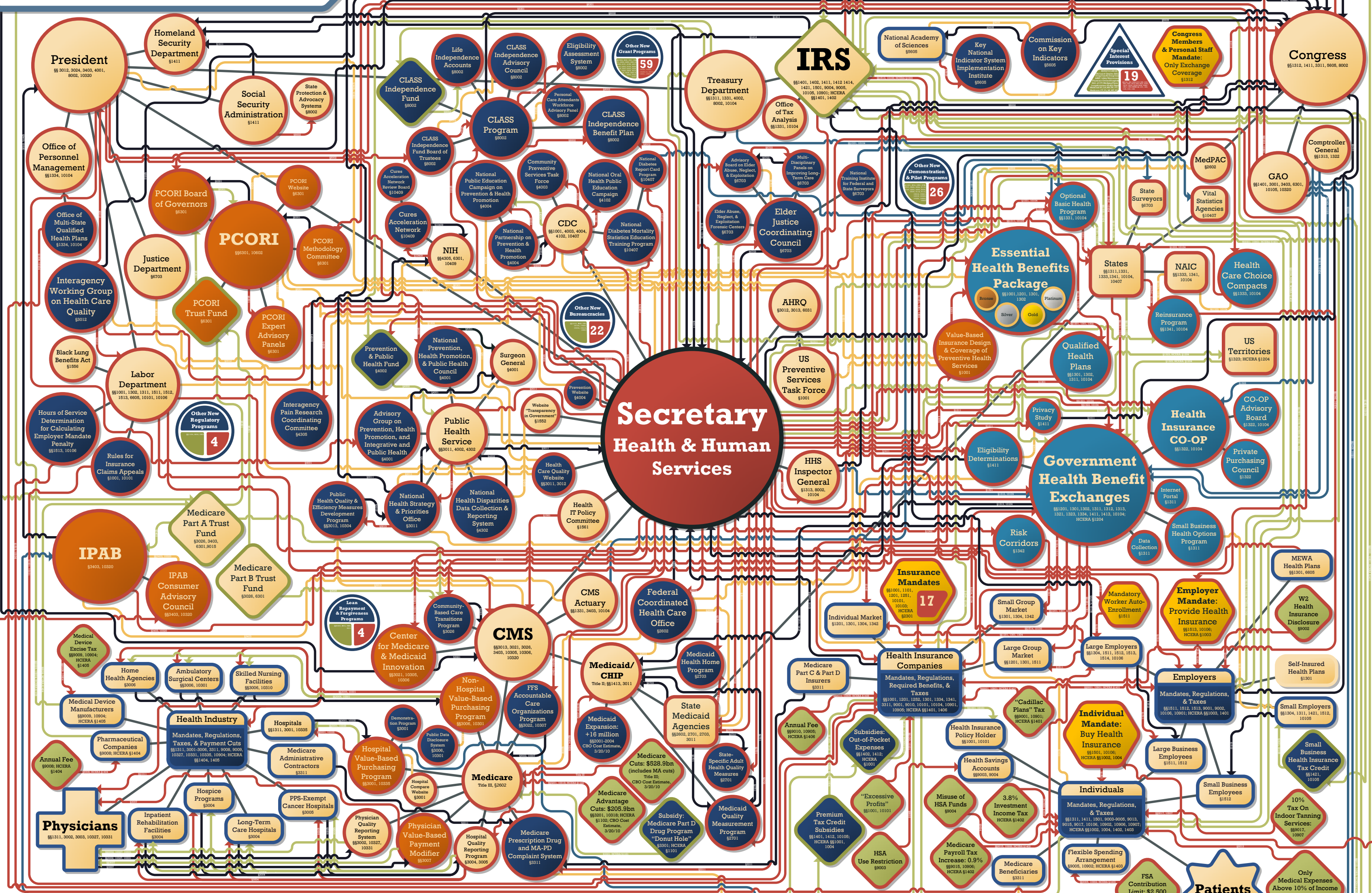
**Patient Protection & Affordable Care Act, P.L. 111-148;  
Health Care & Education Reconciliation Act, P.L. 111-152**

## **PRESS PACKET**

*Prepared by: Joint Economic Committee, Republican Staff  
Congressman Kevin Brady, Senior House Republican  
Senator Sam Brownback, Ranking Member*



# Your New Health Care System



<p><b>New Government</b></p> <ul style="list-style-type: none"> <li><span style="color: red;">●</span> Rationing Potential</li> <li><span style="color: blue;">●</span> Involvement in Health Insurance Market</li> <li><span style="color: green;">●</span> Other Expansions</li> <li><span style="color: purple;">●</span> Represents Bundles of Additional Entities</li> </ul>	<p><b>Expanded Government</b></p> <ul style="list-style-type: none"> <li><span style="color: orange;">●</span> Government with Expanded Authority/Responsibility</li> <li><span style="color: yellow;">●</span> Government Financial Entity with New Inflows/Outflows</li> <li><span style="color: lightblue;">●</span> State/Territory with Expanded Authority/Responsibility</li> </ul>	<p><b>Private</b></p> <ul style="list-style-type: none"> <li><span style="color: lightgreen;">●</span> Private Entity with New Mandates/Regulations/Responsibilities</li> <li><span style="color: lightyellow;">●</span> Unchanged Private Entity</li> <li><span style="color: lightpurple;">●</span> Special Interest Provisions</li> </ul>	<p><b>New Relationships</b></p> <ul style="list-style-type: none"> <li><span style="color: red;">→</span> Regulations/Requirements/Mandates</li> <li><span style="color: blue;">→</span> Reporting Requirements</li> <li><span style="color: green;">→</span> Oversight</li> <li><span style="color: purple;">→</span> Money Flows</li> <li><span style="color: orange;">→</span> Consultation/Advisory/Info Sharing</li> <li><span style="color: lightblue;">→</span> Structural Connections (Includes Existing)</li> </ul>	<p><b>Legend</b></p> <p>AGI: Adjusted Gross Income          AHRQ: Agency for Healthcare Research and Quality          CDC: Centers for Disease Control and Prevention          CHIP: Children's Health Insurance Program          CLASS: Community Living Assistance Services &amp; Supports          CMS: Centers for Medicare &amp; Medicaid Services          CO-OP: Consumer Operated &amp; Oriented Program          FFS: Fee-for-Service          FSA: Flexible Spending Arrangement          GAO: Government Accountability Office          HCERA: Health Care &amp; Education Reconciliation Act          HHS: Health &amp; Human Services Department</p>	<p><b>Legend</b></p> <p>HSA: Health Savings Account          IPAB: Independent Payment Advisory Board          IRS: Internal Revenue Service          MA-PD: Medicare Advantage Prescription Drug          MedPAC: Medicare Payment Advisory Commission          MERD: Medical Early Risk Detection          EALORS: Executive Auxiliary Linked Office Regional Systems          MEWA: Multiple Employer Welfare Arrangement          NAIC: National Association of Insurance Commissioners          NIH: National Institutes of Health          PCORI: Patient-Centered Outcomes Research Institute          PPS: Prospective Payment System</p>	<p><b>Patient Protection &amp; Affordable Care Act, P.L. 111-148; Health Care &amp; Education Reconciliation Act, P.L. 111-152</b>  <i>Prepared by: Joint Economic Committee, Republican Staff</i>  <i>Congressman Kevin Brady, Senior House Republican</i>  <i>Senator Sam Brownback, Ranking Member</i></p>
---	---	--	--	---	---	---